

FA7003

ACESSÓRIOS ACCESSORIES

Referência
Reference

Teton de ligação à estrutura soldado com entalhe
Base support to be welding in main structure with notch

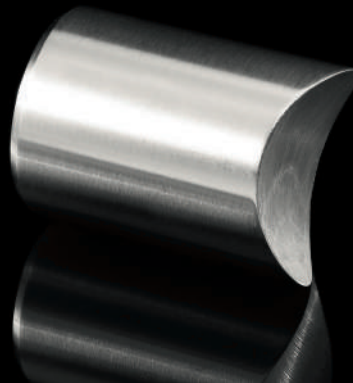
Características | Features

Referência | Reference:
FA7003

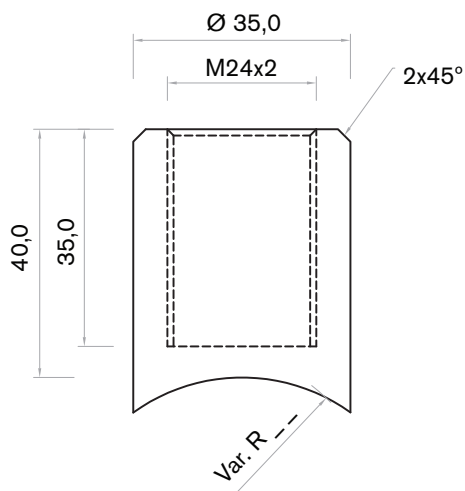
Peso | Weight:
0,170 (kg)

Medida | Size:
35 x 35 x 40 (mm)

Material | Material:
AISI 316



Desenho Técnico | Dimensional Drawing



Aplicação no Sistema | System Application

